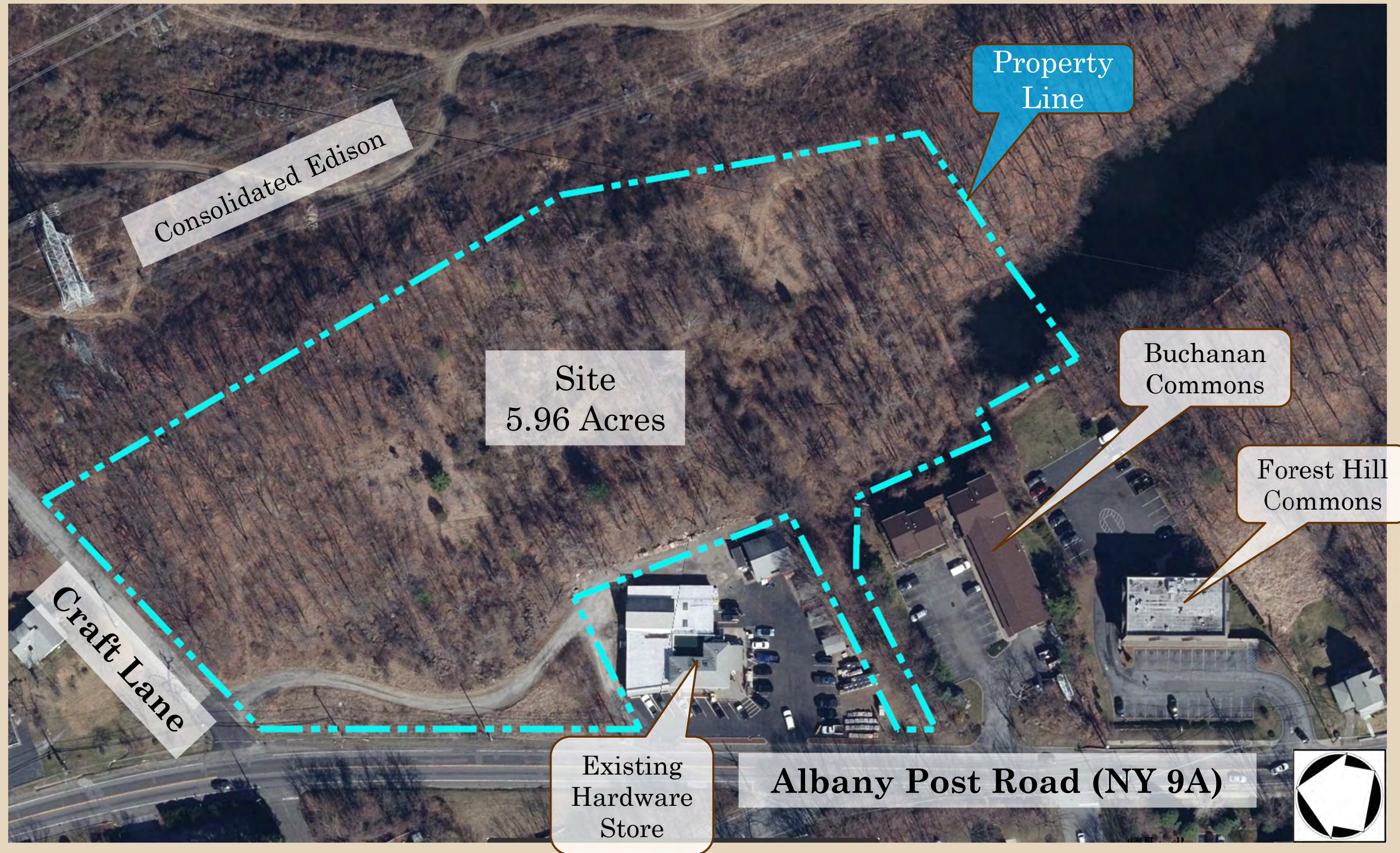


Existing Conditions

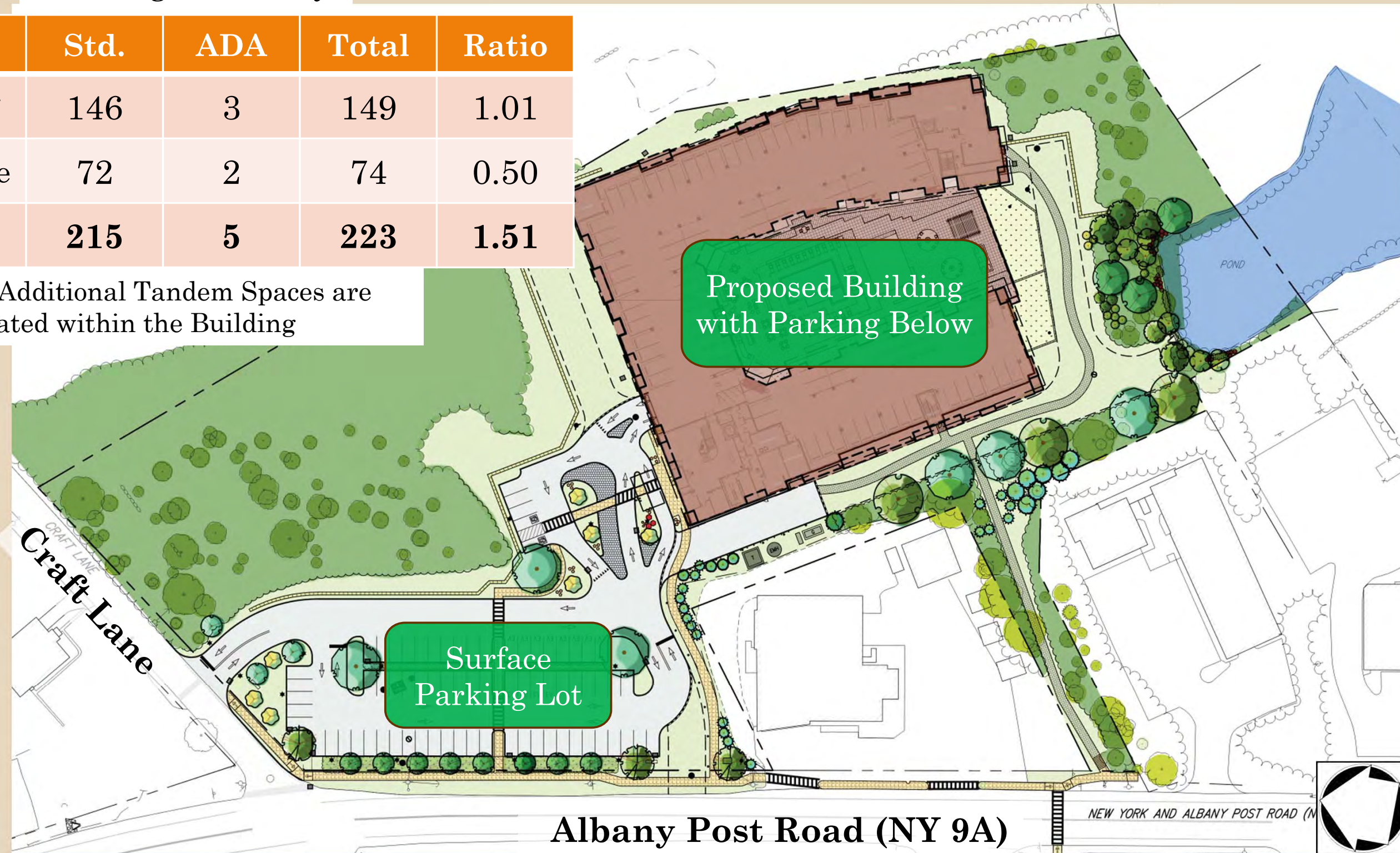


Site Plan

Parking Summary

Desc.	Std.	ADA	Total	Ratio
Bldg.*	146	3	149	1.01
Surface	72	2	74	0.50
Total	215	5	223	1.51

*9 Additional Tandem Spaces are located within the Building

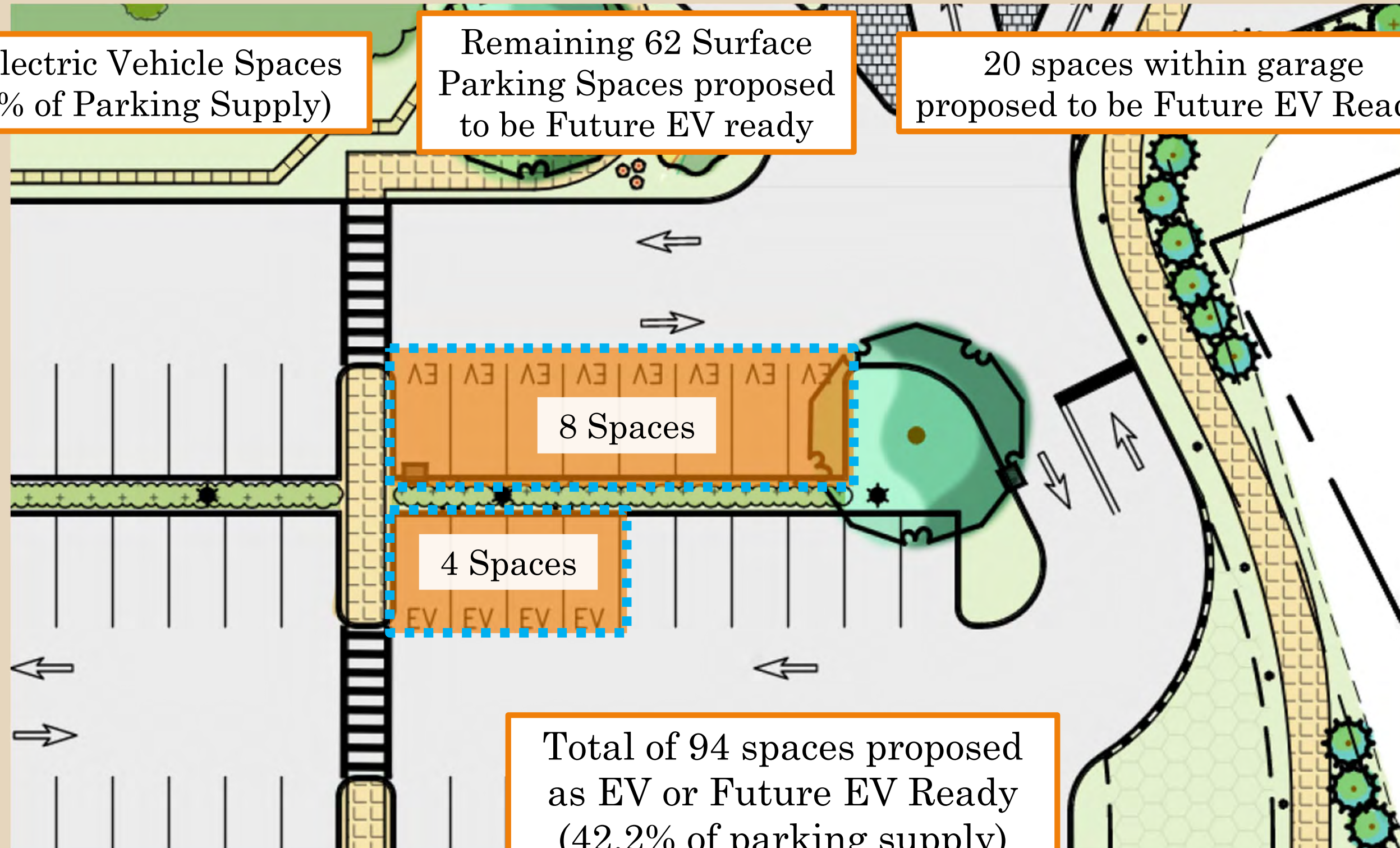


Electric Vehicle Spaces

12 Electric Vehicle Spaces
(5.4% of Parking Supply)

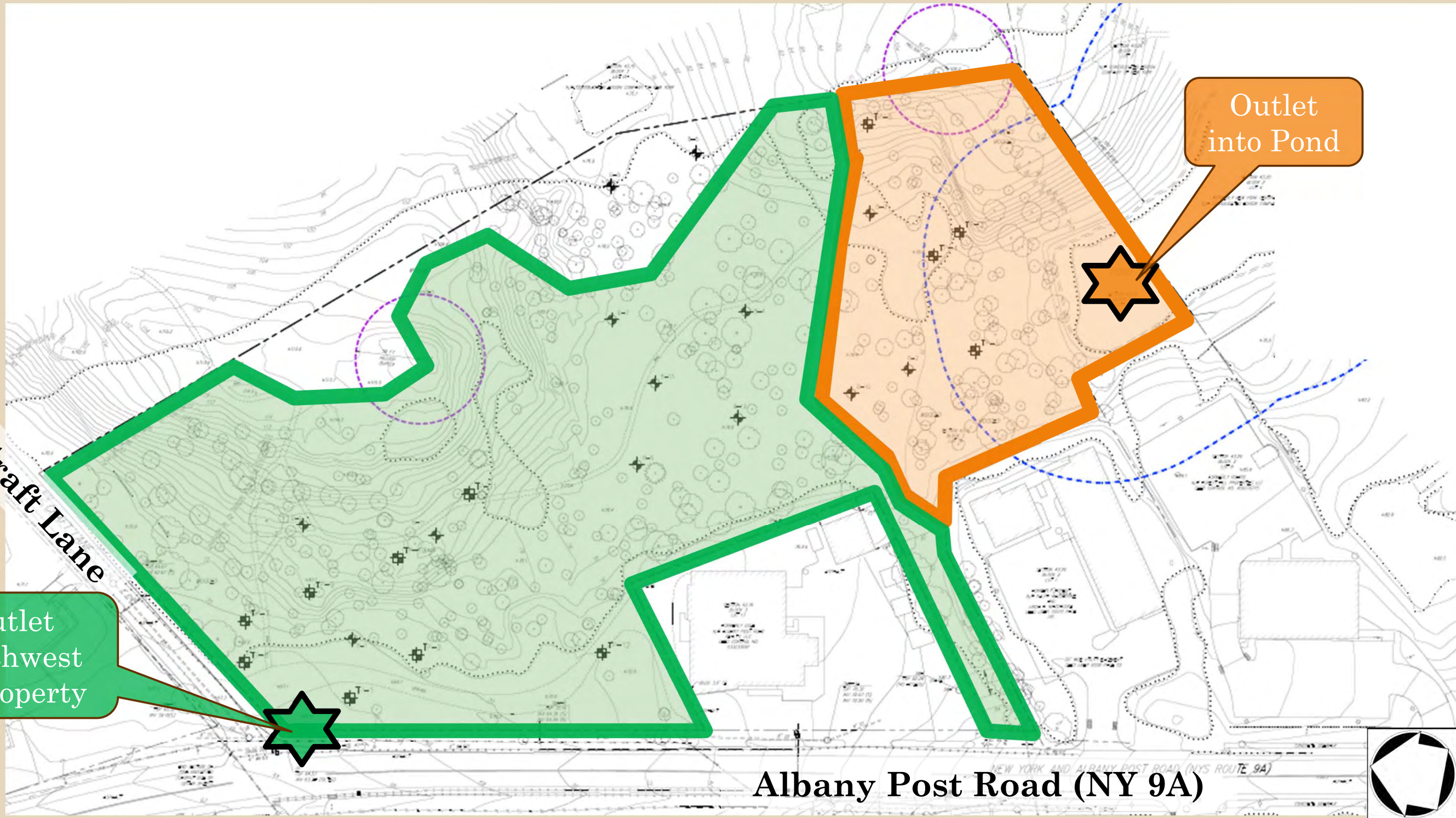
Remaining 62 Surface
Parking Spaces proposed
to be Future EV ready

20 spaces within garage
proposed to be Future EV Ready

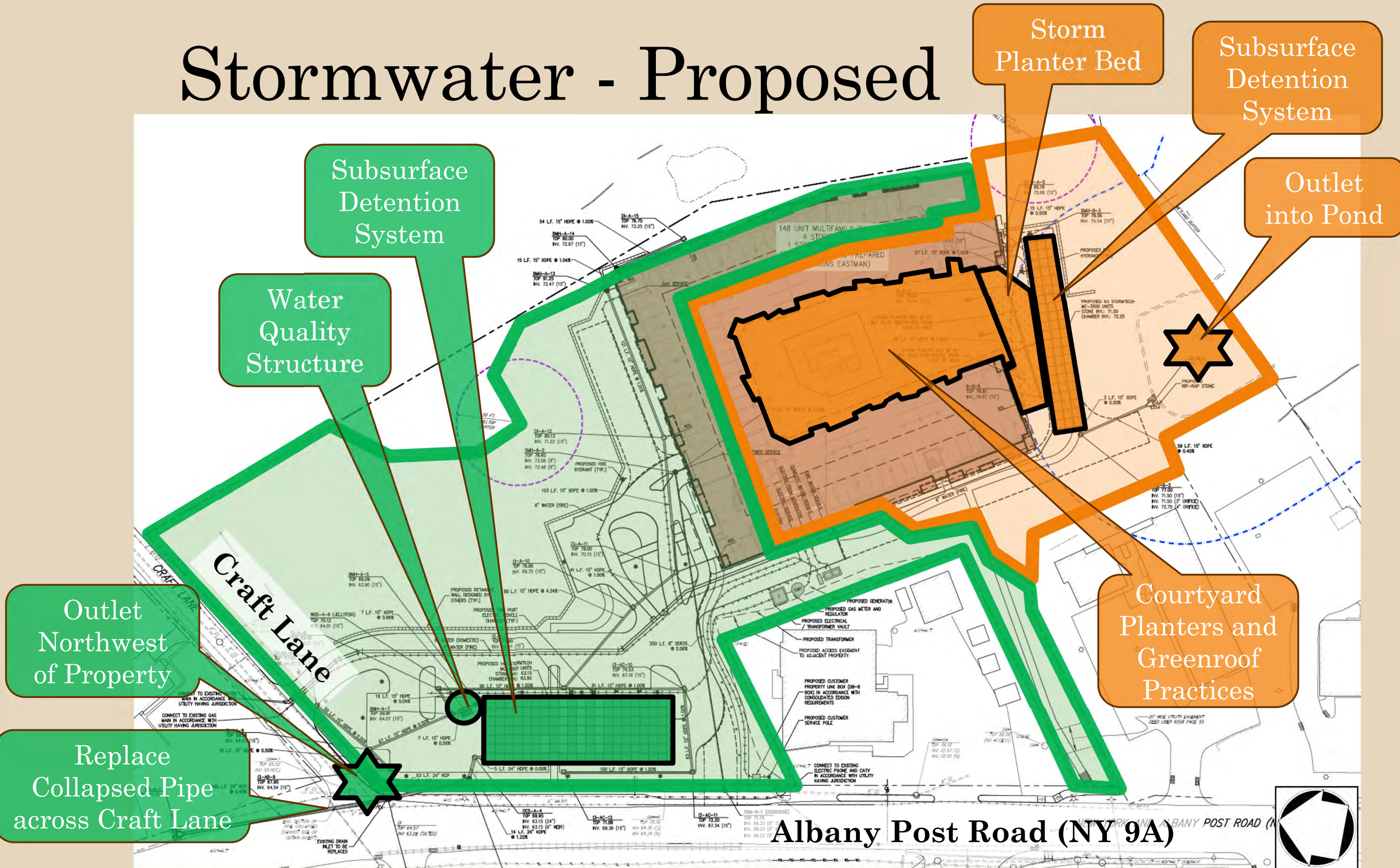


Total of 94 spaces proposed
as EV or Future EV Ready
(42.2% of parking supply)

Stormwater - Existing



Stormwater - Proposed

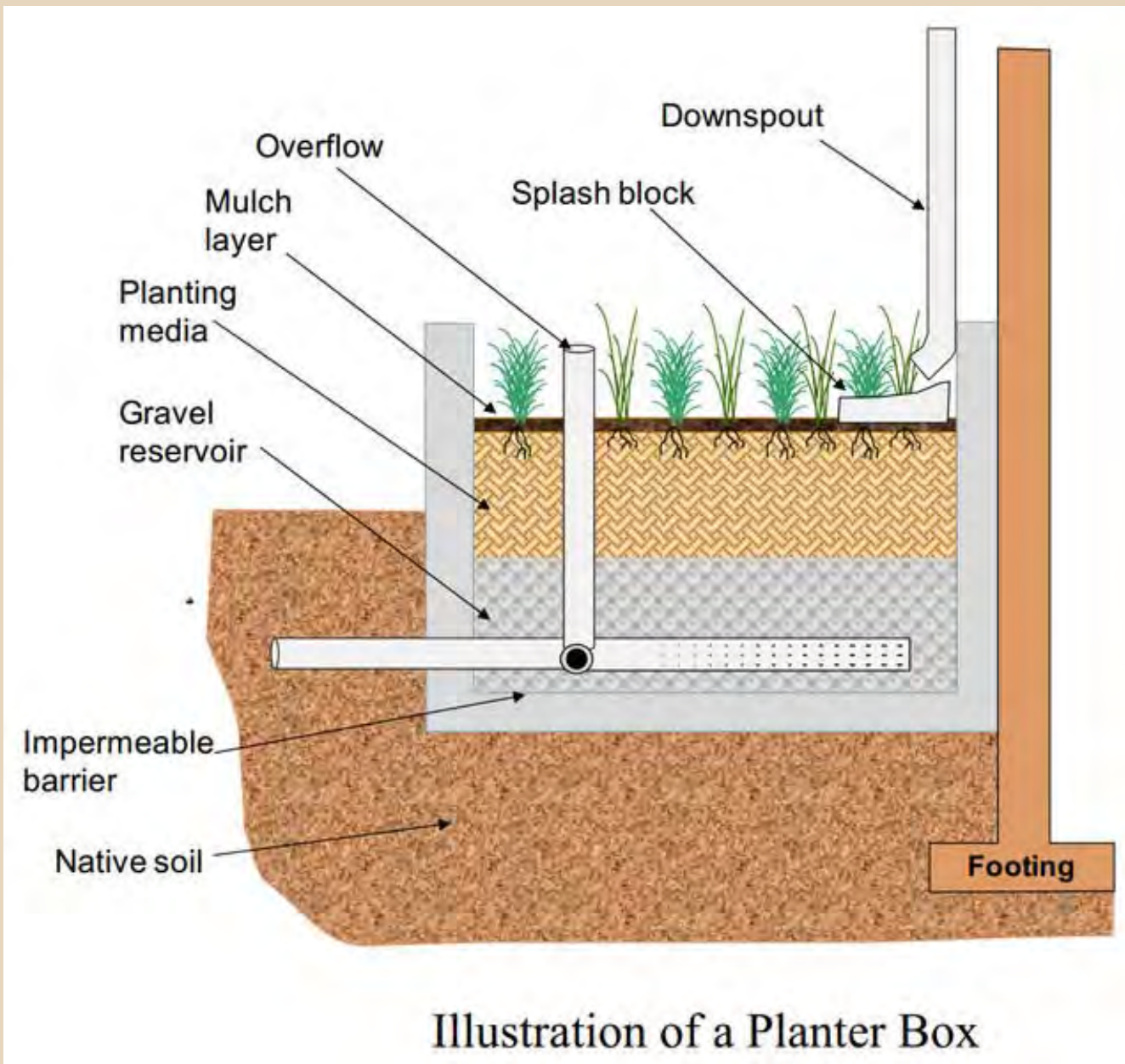


Albany Post Road (NY 9A)

Stormwater Planter Areas

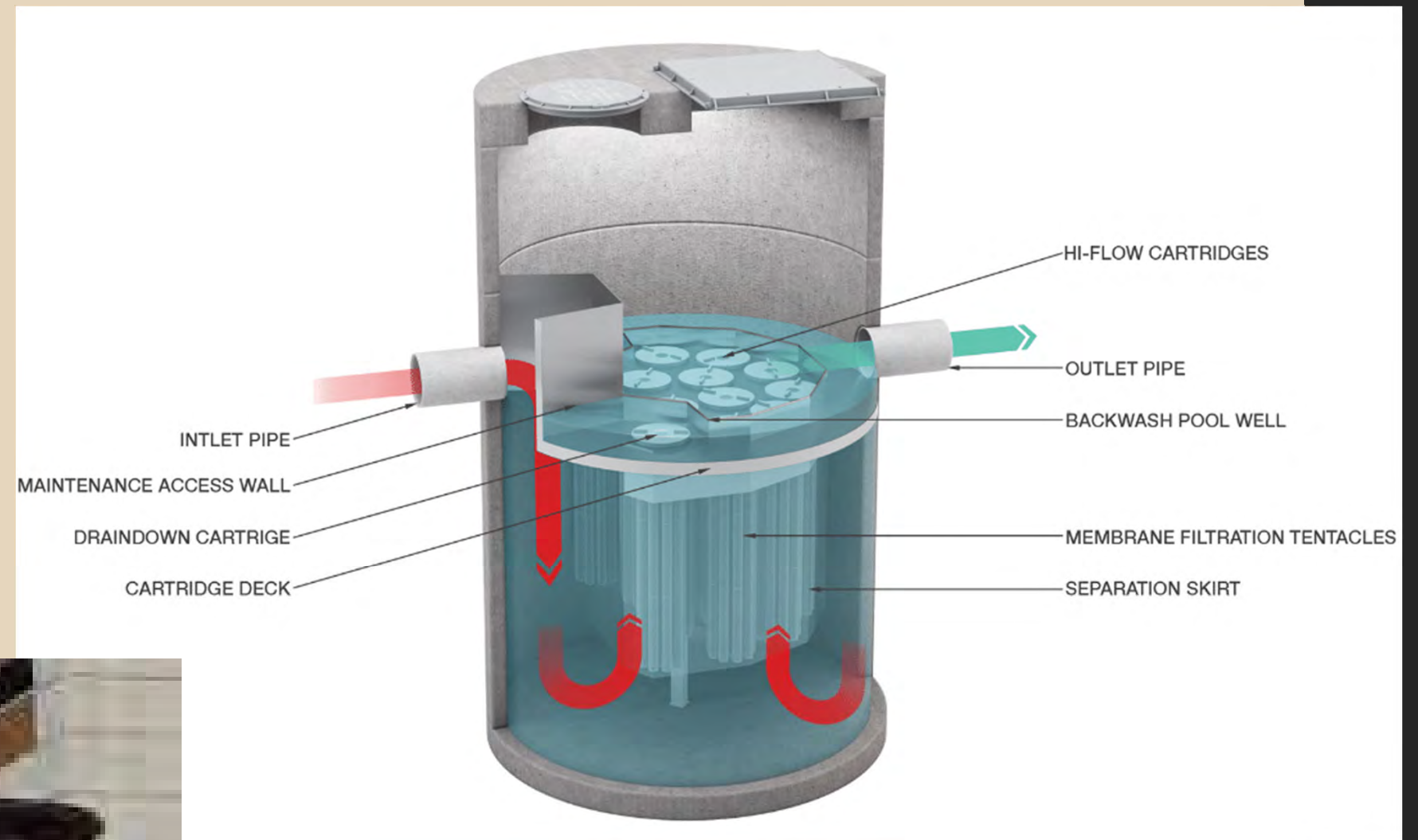
Stormwater Planter
At Grade

Intensive Green Roof
(within planter areas)



Jellyfish Filter

Water Quality Structure



Subsurface Chambers

Stormwater Detention



Lighting



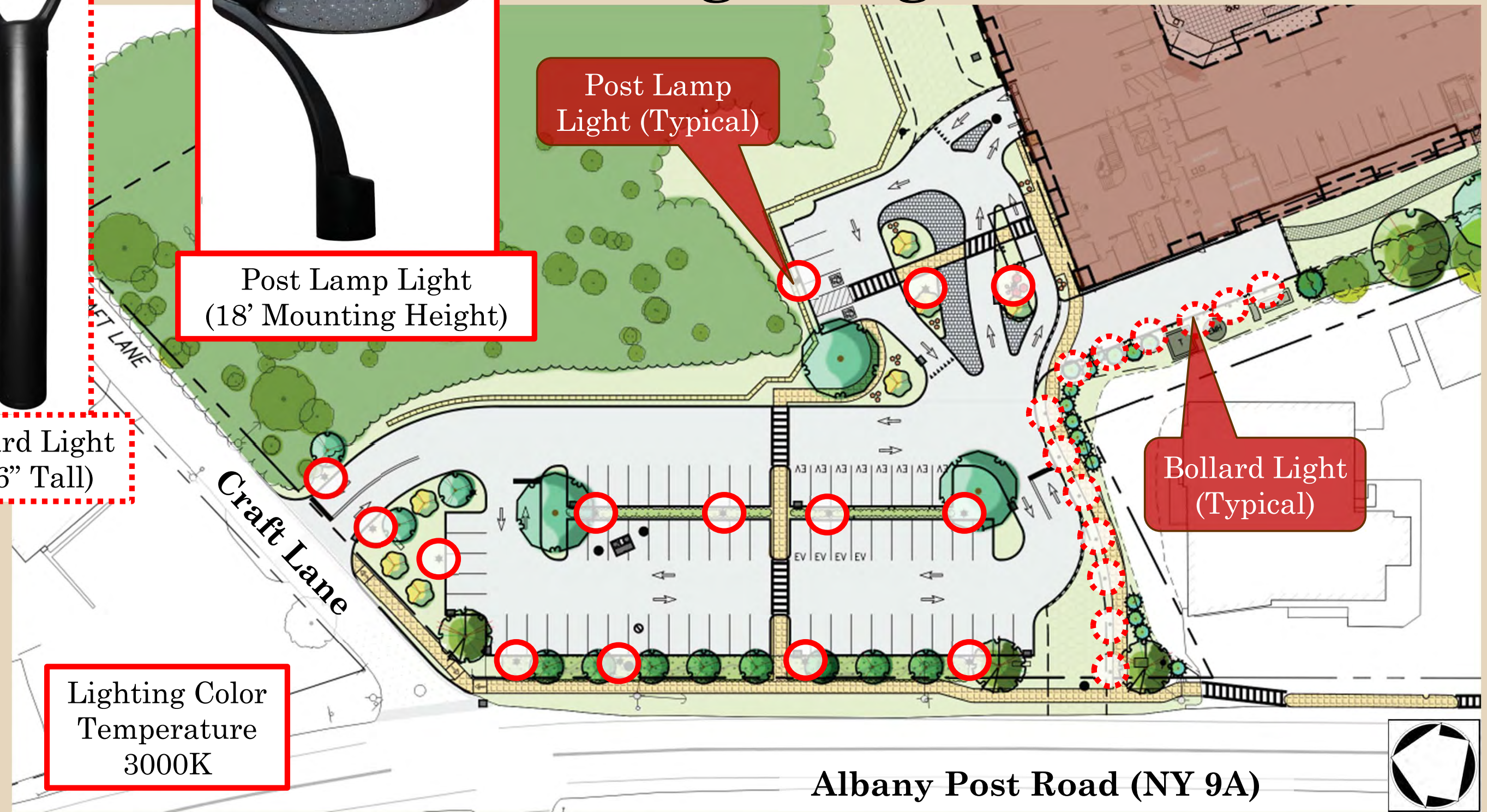
Post Lamp Light
(18' Mounting Height)

Post Lamp
Light (Typical)

Bollard Light
(3'-6" Tall)

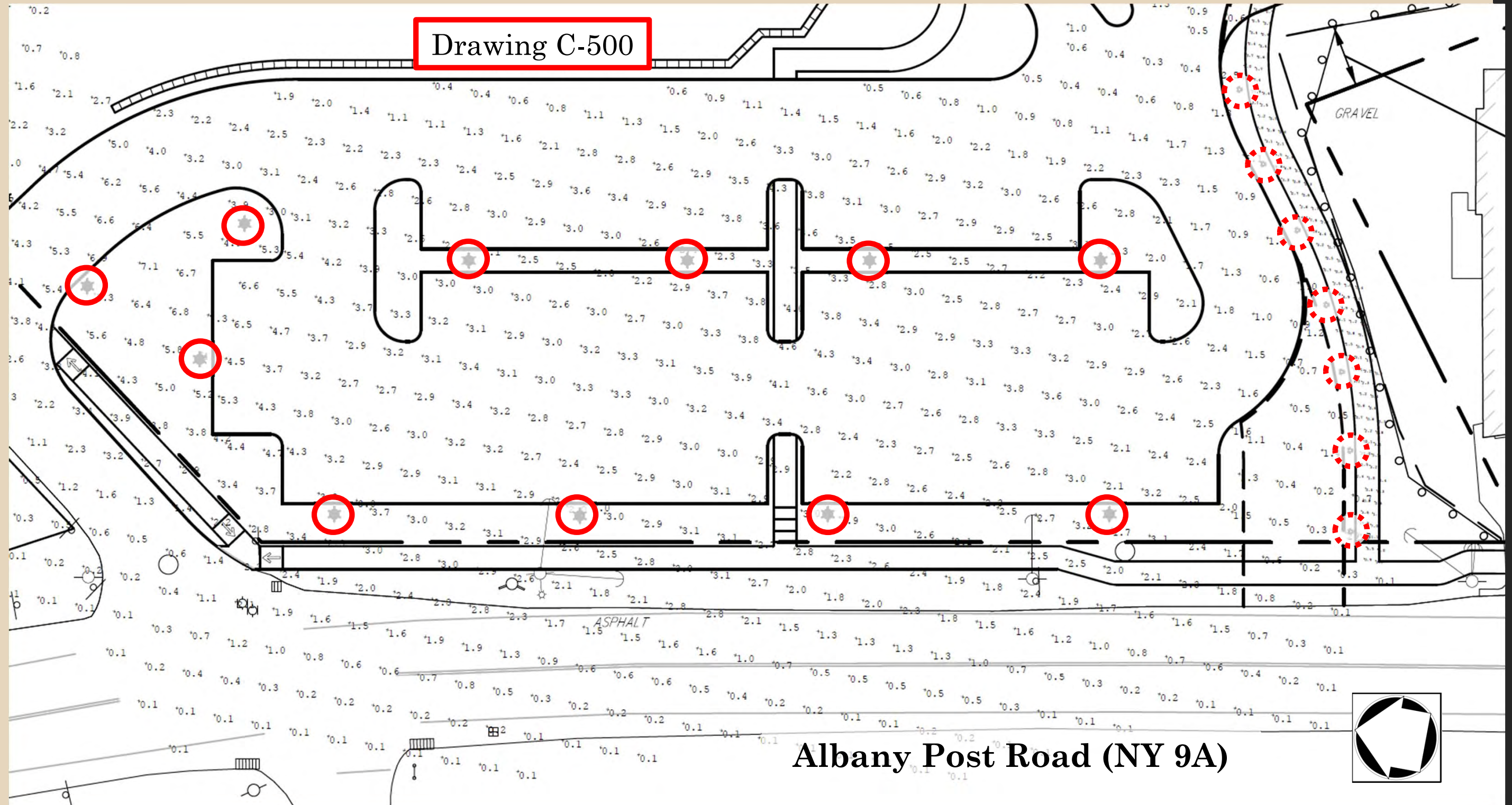
Bollard Light
(Typical)

Lighting Color
Temperature
3000K



Albany Post Road (NY 9A)

Lighting Levels



Courtyard Lighting



Pathway
Bollard Light
(3'-6" Tall)

Courtyard Lighting



Strip lighting on toe kicks of planters



Wall sconce lights mounted to planters



Pole mounted lights in grill areas and high traffic areas



12 foot mounting height

Courtyard Lighting

BASE "B"
 material techno polymer
 colour matt grey



STICKS "A"
 material PVC
 colour matt white



ELECTRICAL CABLE "C"
 colour black



ACCESSORY RING "O"
 material silicone

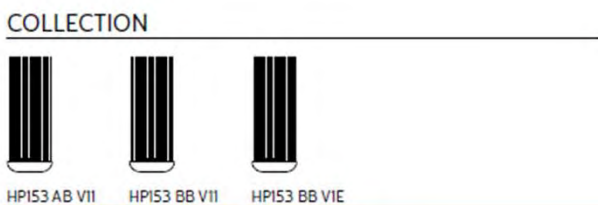
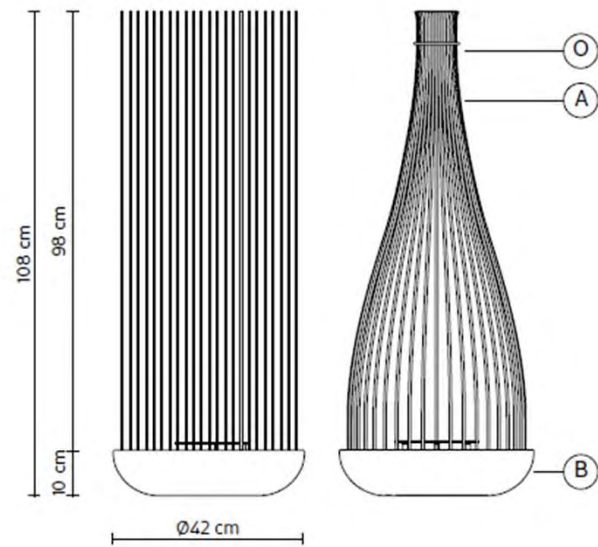
ELECTRICAL SYSTEM
 source LED
 1 x 29W, 2600 lumen
 3000K CRI ≥ 80
 class A+

PACKAGING
 n° cartons 2
 net weight/kg 13 (A+B)
 gross weight/kg 16 (A+B)
 packaging/cm 10x10x140 (A) - 5x5x32 (B)

LIGHT EMISSION
 unidirectional



LED equipped



twicebright

STL SERIES - Festoon/String Lighting

STL Series - Commercial Grade String Lights

Date: Job: Type:
 Notes:



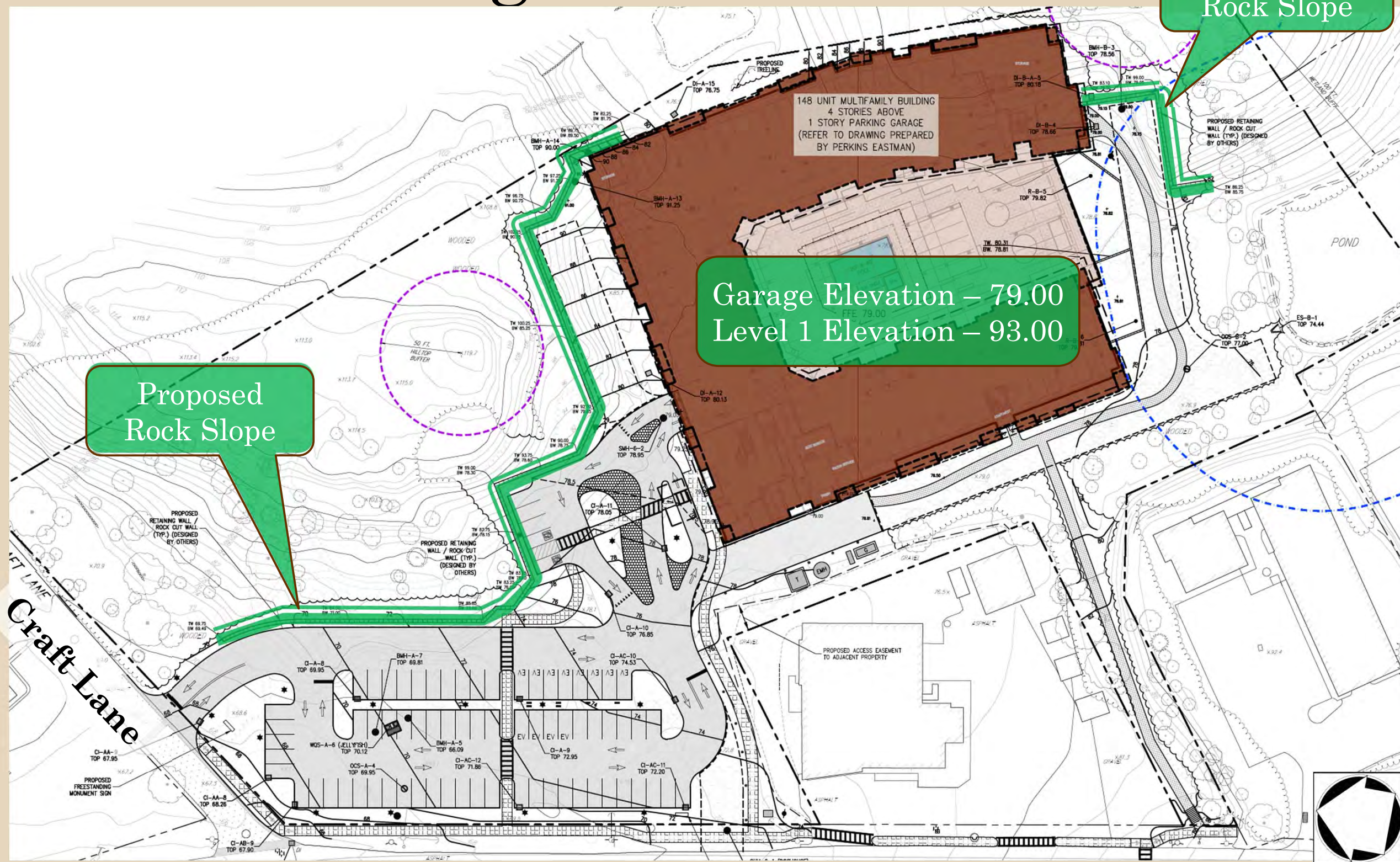
The STL Series commercial grade string lighting is great addition to any outdoor or indoor space. LED bulbs offer energy savings over traditional incandescent ones, while still maintaining the same visual aesthetic. Durable and weatherproof, the STL Series will create a warm, inviting environment in any hospitality venue..



Decorative floor lamps by pool

Bistro Lights in various seating areas

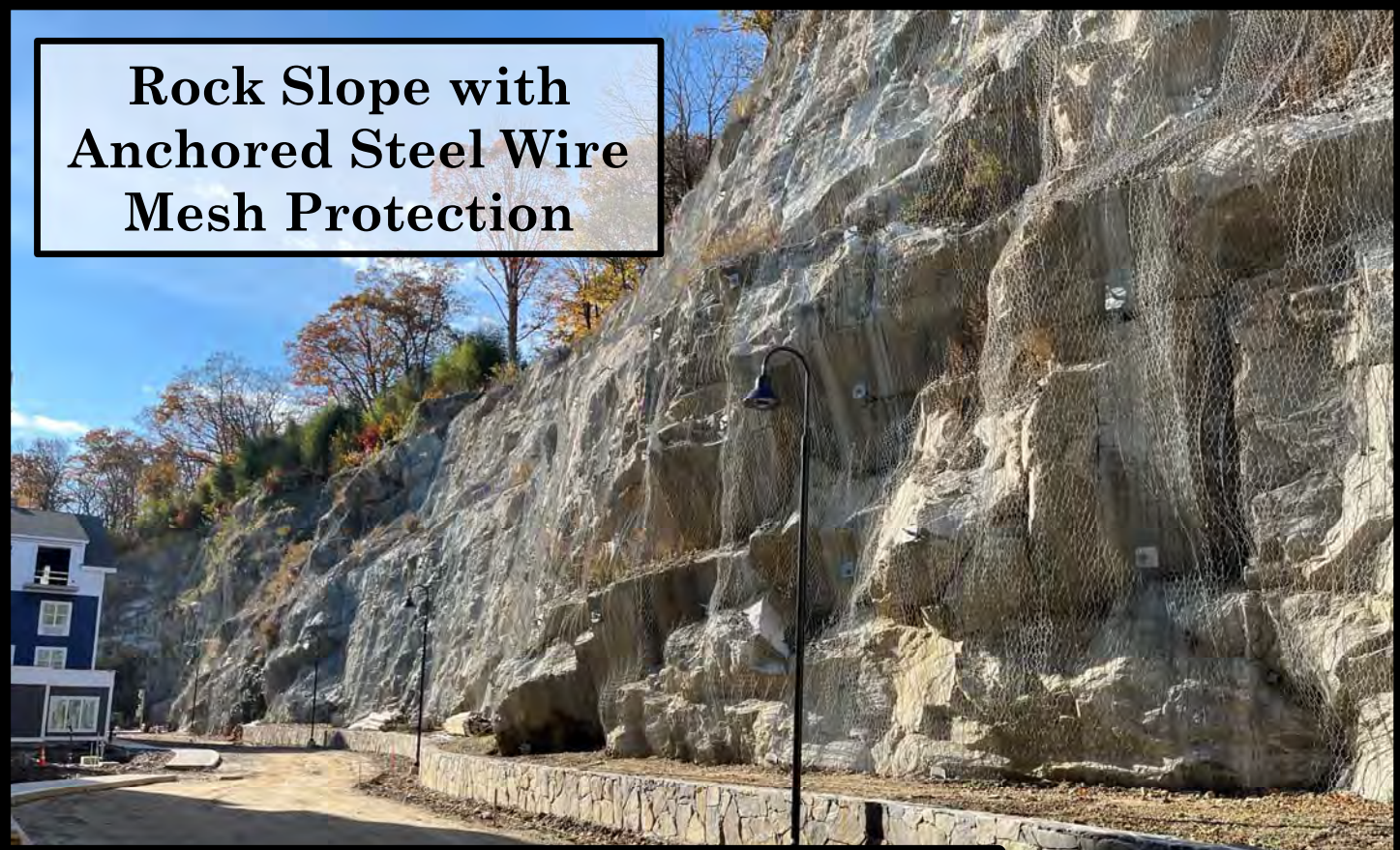
Site Grading



Rock Cut Treatment



**Exposed
Rock Slope**



**Rock Slope with
Anchored Steel Wire
Mesh Protection**

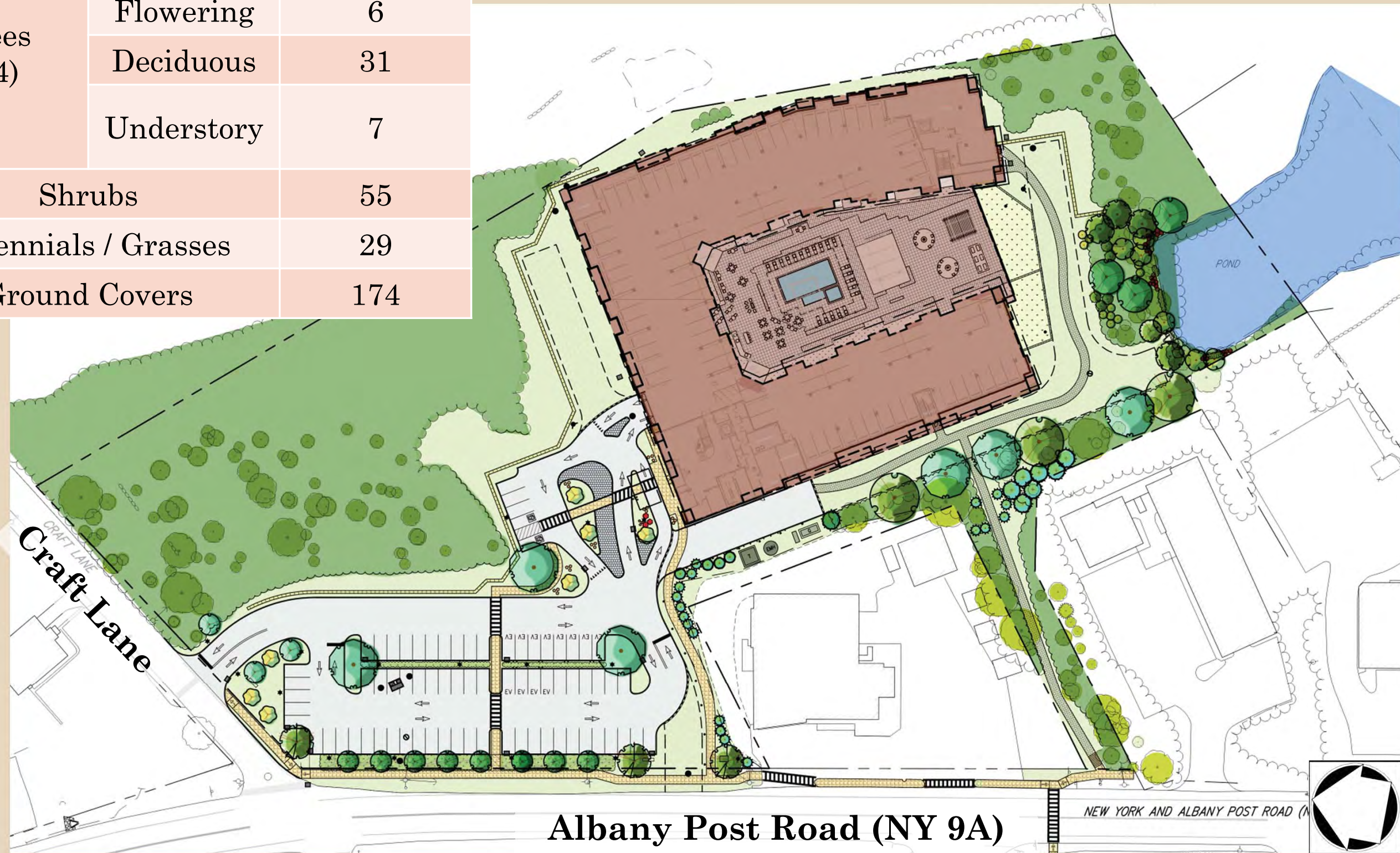


**Retaining Wall
Treatment**

Plant Schedule Summary

Trees (74)	Evergreen	30
	Flowering	6
	Deciduous	31
	Understory	7
Shrubs		55
Perennials / Grasses		29
Ground Covers		174

Landscaping



Off-Site Improvements

Proposed Sidewalk along Craft Road to Site Driveway



Craft Lane

Albany Post Road (NY 9A)

NEW YORK A

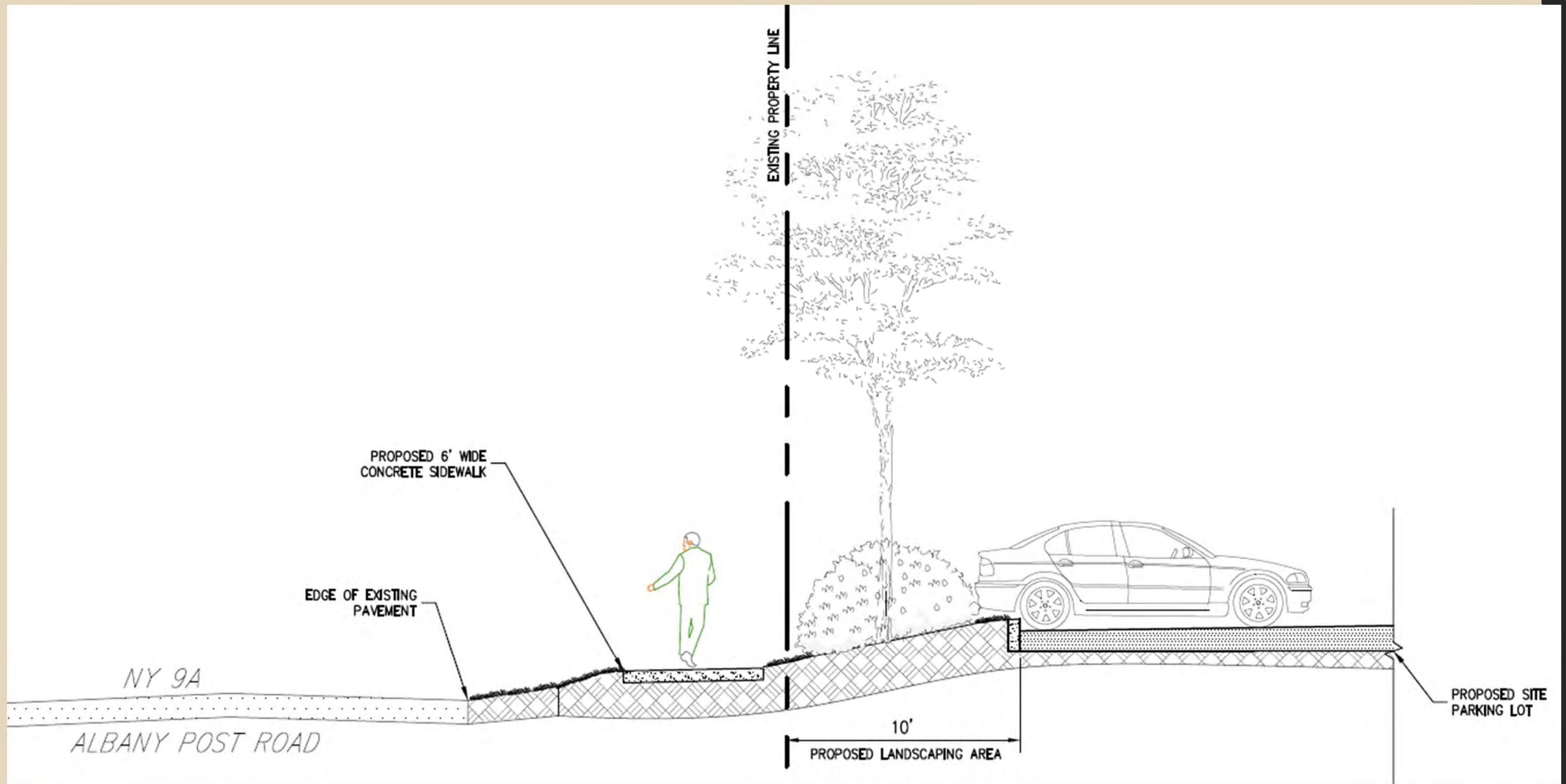


Proposed Trees, Shrubs, and Perennials

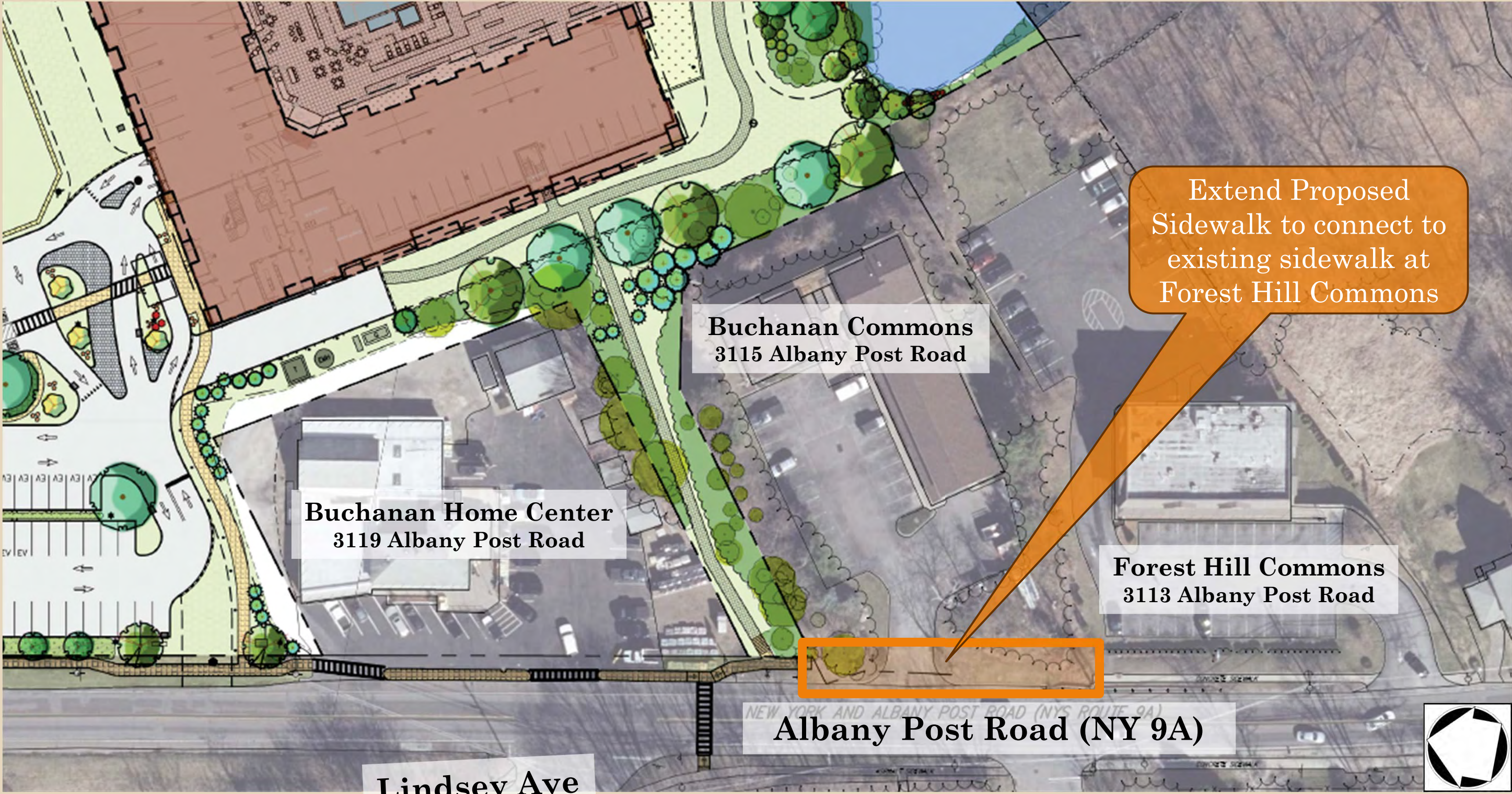
Proposed Sidewalk along Albany Post Road Frontage

Proposed Pedestrian Crossing of Albany Post Road with appropriate signing and striping

Frontage Landscaping Section



Additional Sidewalk Extension



Extend Proposed Sidewalk to connect to existing sidewalk at Forest Hill Commons

Buchanan Commons
3115 Albany Post Road

Buchanan Home Center
3119 Albany Post Road

Forest Hill Commons
3113 Albany Post Road

Albany Post Road (NY 9A)

Lindsey Ave

