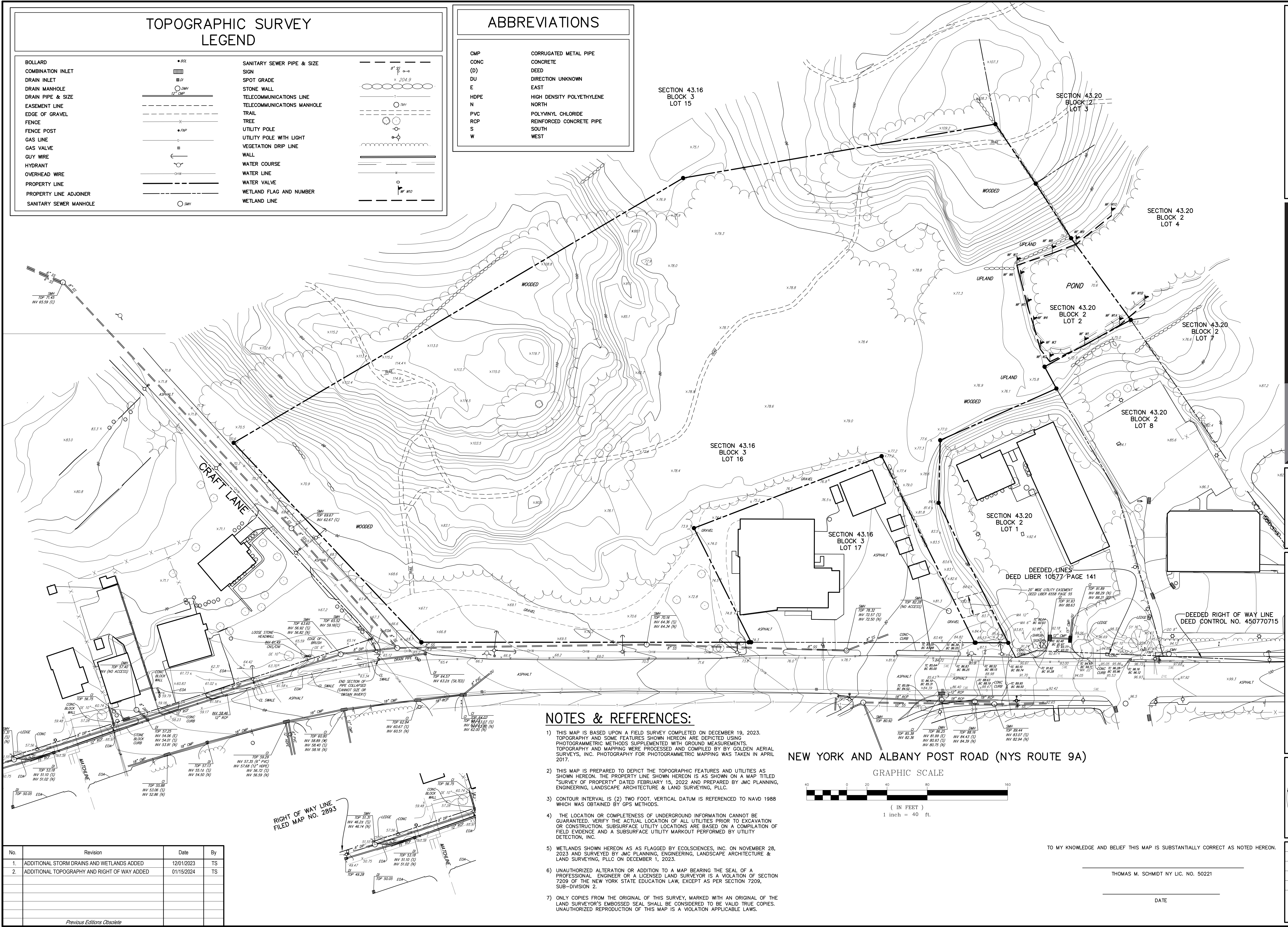


TOPOGRAPHIC SURVEY LEGEND

BOLLARD	• BS	SANITARY SEWER PIPE & SIZE	---
COMBINATION INLET	□	SIGN	---
DRAIN INLET	○	SPOT GRADE	○
DRAIN MANHOLE	○	STONE WALL	---
DRAIN PIPE & SIZE	○	TELECOMMUNICATIONS LINE	---
EASEMENT LINE	---	TELECOMMUNICATIONS MANHOLE	○
EDGE OF GRAVEL	---	TRAIL	---
FENCE	---	TREE	○
FENCE POST	•	UTILITY POLE	○
GAS LINE	---	UTILITY POLE WITH LIGHT	○
GAS VALVE	○	VEGETATION DRIP LINE	---
GUY WIRE	---	WALL	---
HYDRANT	○	WATER COURSE	---
OVERHEAD WIRE	---	WATER LINE	---
PROPERTY LINE	---	WATER VALVE	○
PROPERTY LINE ADJOINER	---	WETLAND FLAG AND NUMBER	○
SANITARY SEWER MANHOLE	○	WETLAND LINE	---

ABBREVIATIONS

CMP	CORRUGATED METAL PIPE
CONC	CONCRETE
(D)	DEED
DU	DIRECTION UNKNOWN
E	EAST
HDPE	HIGH DENSITY POLYETHYLENE
N	NORTH
PVC	POLYVINYL CHLORIDE
RCP	REINFORCED CONCRETE PIPE
S	SOUTH
W	WEST

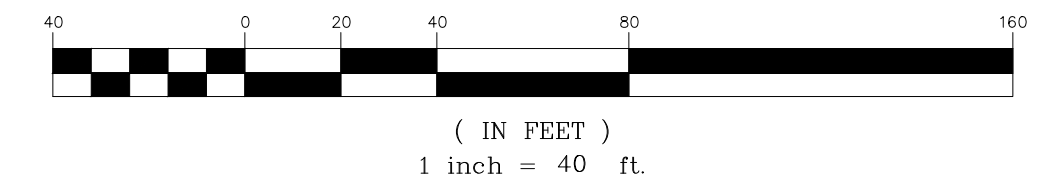


NOTES & REFERENCES:

- THIS MAP IS BASED UPON A FIELD SURVEY COMPLETED ON DECEMBER 19, 2023. TOPOGRAPHY AND SOME FEATURES SHOWN HEREON ARE DEPICTED USING PHOTOGRAMMETRIC METHODS SUPPLEMENTED WITH GROUND MEASUREMENTS. TOPOGRAPHY AND MAPPING WERE PROCESSED AND COMPILED BY GOLDEN AERIAL SURVEYS, INC. PHOTOGRAPHY FOR PHOTOGRAMMETRIC MAPPING WAS TAKEN IN APRIL 2017.
- THIS MAP IS PREPARED TO DEPICT THE TOPOGRAPHIC FEATURES AND UTILITIES AS SHOWN HEREON. THE PROPERTY LINE SHOWN HEREON IS AS SHOWN ON A MAP TITLED "SURVEY OF PROPERTY" DATED FEBRUARY 15, 2022 AND PREPARED BY JMC PLANNING, ENGINEERING, LANDSCAPE ARCHITECTURE & LAND SURVEYING, PLLC.
- CONTOUR INTERVAL IS (2) TWO FOOT. VERTICAL DATUM IS REFERENCED TO NAVD 1988 WHICH WAS OBTAINED BY GPS METHODS.
- THE LOCATION OR COMPLETENESS OF UNDERGROUND INFORMATION CANNOT BE GUARANTEED. VERIFY THE ACTUAL LOCATION OF ALL UTILITIES PRIOR TO EXCAVATION OR CONSTRUCTION. SUBSURFACE UTILITY LOCATIONS ARE BASED ON A COMPILATION OF FIELD EVIDENCE AND A SUBSURFACE UTILITY MARKOUT PERFORMED BY UTILITY DETECTION, INC.
- WETLANDS SHOWN HEREON AS AS FLAGGED BY ECOSCIENCES, INC. ON NOVEMBER 28, 2023 AND SURVEYED BY JMC PLANNING, ENGINEERING, LANDSCAPE ARCHITECTURE & LAND SURVEYING, PLLC ON DECEMBER 1, 2023.
- UNAUTHORIZED ALTERATION OR ADDITION TO A MAP BEARING THE SEAL OF A PROFESSIONAL ENGINEER OR A LICENSED LAND SURVEYOR IS A VIOLATION OF SECTION 7209 OF THE NEW YORK STATE EDUCATION LAW, EXCEPT AS PER SECTION 7209, SUB-DIVISION 2.
- ONLY COPIES FROM THE ORIGINAL OF THIS SURVEY, MARKED WITH AN ORIGINAL OF THE LAND SURVEYOR'S EMBOSSED SEAL SHALL BE CONSIDERED TO BE VALID TRUE COPIES. UNAUTHORIZED REPRODUCTION OF THIS MAP IS A VIOLATION APPLICABLE LAWS.

NEW YORK AND ALBANY POST ROAD (NYS ROUTE 9A)

GRAPHIC SCALE



TO MY KNOWLEDGE AND BELIEF THIS MAP IS SUBSTANTIALLY CORRECT AS NOTED HEREON.

THOMAS M. SCHMIDT NY LIC. NO. 50221

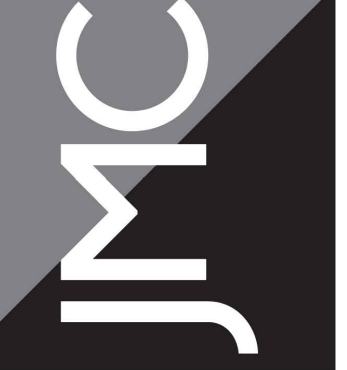
DATE

No.	Revision	Date	By
1.	ADDITIONAL STORM DRAINS AND WETLANDS ADDED	12/01/2023	TS
2.	ADDITIONAL TOPOGRAPHY AND RIGHT OF WAY ADDED	01/15/2024	TS

Previous Editions Obsolete

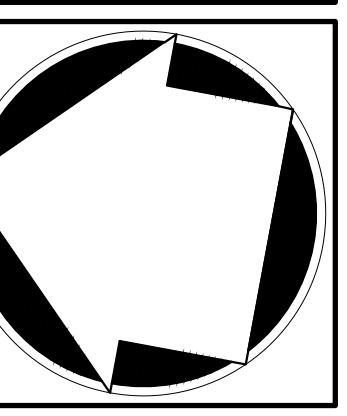
AMS ACQUISITIONS
488 MADISON AVENUE, SUITE 1901
NEW YORK, NY 10022

JMC Planning, Engineering, Landscape Architecture & Land Surveying, PLLC
JMC Site Development Consultants, LLC
John Meyer Consulting, Inc.
120 BEDFORD ROAD - ARMONK, NY 10504
voice 914.273.5225 • fax 914.273.2102
www.jmcplic.com



TOPOGRAPHIC SURVEY

CRAFT LANE AND ALBANY POST ROAD
VILLAGE OF BUCHANAN, TOWN OF CORTLANDT
WESTCHESTER COUNTY, STATE OF NEW YORK



Drawn: TS Approved: TS
Scale: 1" = 40'
Date: 02/15/2022
Project No: 21130
21130-TS-1.dwg TS-1.tbl
Drawing No: TS-1